

TUSCANY - PARCEL "D-1"

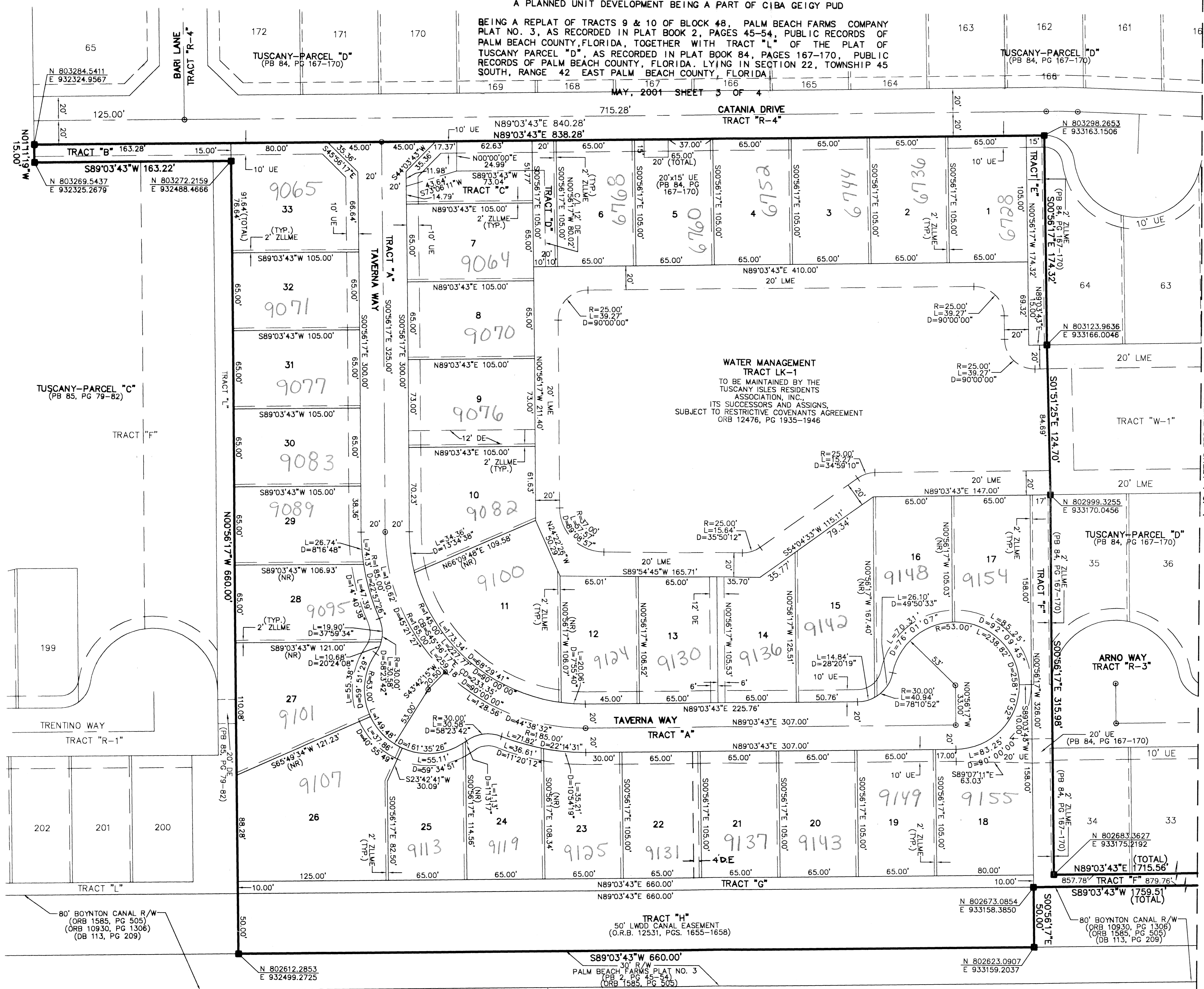
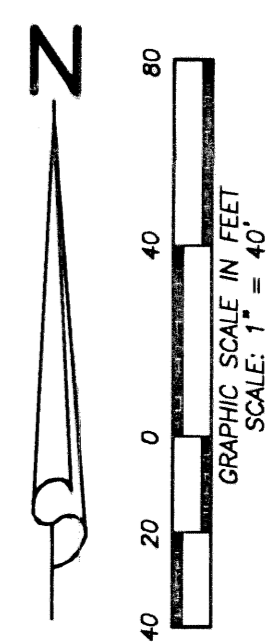
A PLANNED UNIT DEVELOPMENT BEING A PART OF CIBA GEIGY PUD

BEING A REPLAT OF TRACTS 9 & 10 OF BLOCK 48, PALM BEACH FARMS COMPANY PLAT NO. 3, AS RECORDED IN PLAT BOOK 2, PAGES 45-54, PUBLIC RECORDS OF PALM BEACH COUNTY, FLORIDA, TOGETHER WITH TRACT "L" OF THE PLAT OF TUSCANY PARCEL "D", AS RECORDED IN PLAT BOOK 84, PAGES 167-170, PUBLIC RECORDS OF PALM BEACH COUNTY, FLORIDA, LYING IN SECTION 22, TOWNSHIP 45 SOUTH, RANGE 42 EAST PALM BEACH COUNTY, FLORIDA

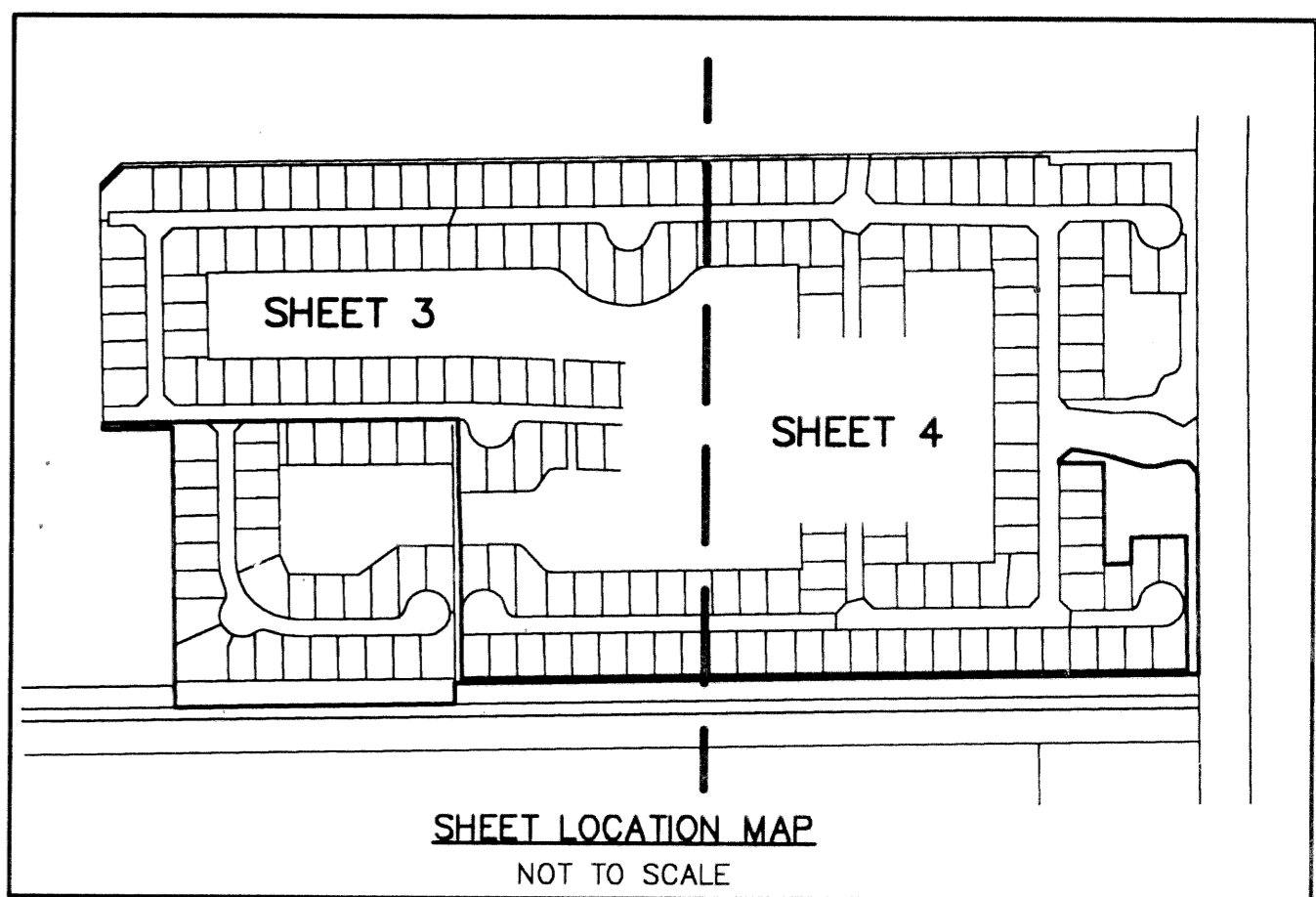
MAY, 2001 SHEET 3 OF 4

31

STATE OF FLORIDA
COUNTY OF PALM BEACH
THIS PLAT WAS FILED FOR
RECORD _____ DAY OF _____
AD, 2001 AND DULY RECORDED
IN PLAT BOOK _____ ON PAGES
_____ AND _____
DOROTHY H. WILKEN, CLERK
BY: _____, D.C.



- LEGEND:**
- BE = BUFFER EASEMENT
 - DB = DEED BOOK
 - D = DELTA (CENTRAL) ANGLE
 - DE = DRAINAGE EASEMENT
 - FND = FOUND
 - L = ARC LENGTH
 - LME = LAKE MAINTENANCE EASEMENT
 - NO. = NUMBER
 - NR = NON-RADIAL
 - OHME = OVERHANG MAINTENANCE EASEMENT
 - ORB = OFFICIAL RECORD BOOK
 - PB = PLAT BOOK
 - PG(S) = PAGE(S)
 - POB = POINT OF BEGINNING
 - PUD = PLANNED UNIT OF DEVELOPMENT
 - R = RADIUS
 - R/W = RIGHT-OF-WAY
 - (TYP) = TYPICAL
 - UE = UTILITY EASEMENT
 - ZLLME = ZERO LOT LINE OVERHANG MAINTENANCE EASEMENT
 - = SET 4"x4" CONCRETE MONUMENT
 - = SET PERMANENT CONTROL POINT
 - "LB#7055" = "LB#7055" UNLESS OTHERWISE SHOWN



Wantman Group, Inc.
Engineering ♦ Surveying ♦ Mapping
901 NORTHPOINT PARKWAY, SUITE 204
WEST PALM BEACH, FL 33407
(561) 687-2220 phone (561) 687-1110 fax
CERT No. 6091 - LB No. 7055

| | | | |
|-----|------------------------------|----------------|---------------|
| CAD | K:\LEVI\TUSCANY\DWG\TUSCRP04 | | |
| REF | K:\LEVI\TUSCANY\DWG\TUSCMG01 | | |
| FLD | RP/AB | FB. 000 PG. 00 | JOB 00-036A |
| OFF | AJP | | DATE 01/31/01 |
| CKD | RBP | SHEET 3 OF 4 | DWG 00-020 |

SUBDIVISION Tuscany - Parcel "D-1"
 PLAT BOOK 84, PG 167-170
 ZONING C-1
 ZIP CODE 33412
 PLAT NAME Ciba Geigy PUD